

TOWER UNIT 3 & 4 DRAWERS

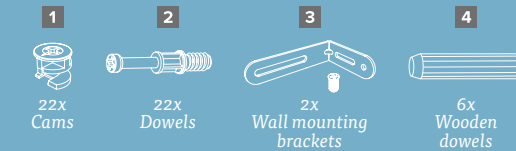
(400 & 600mm wide)

Assembly Instructions

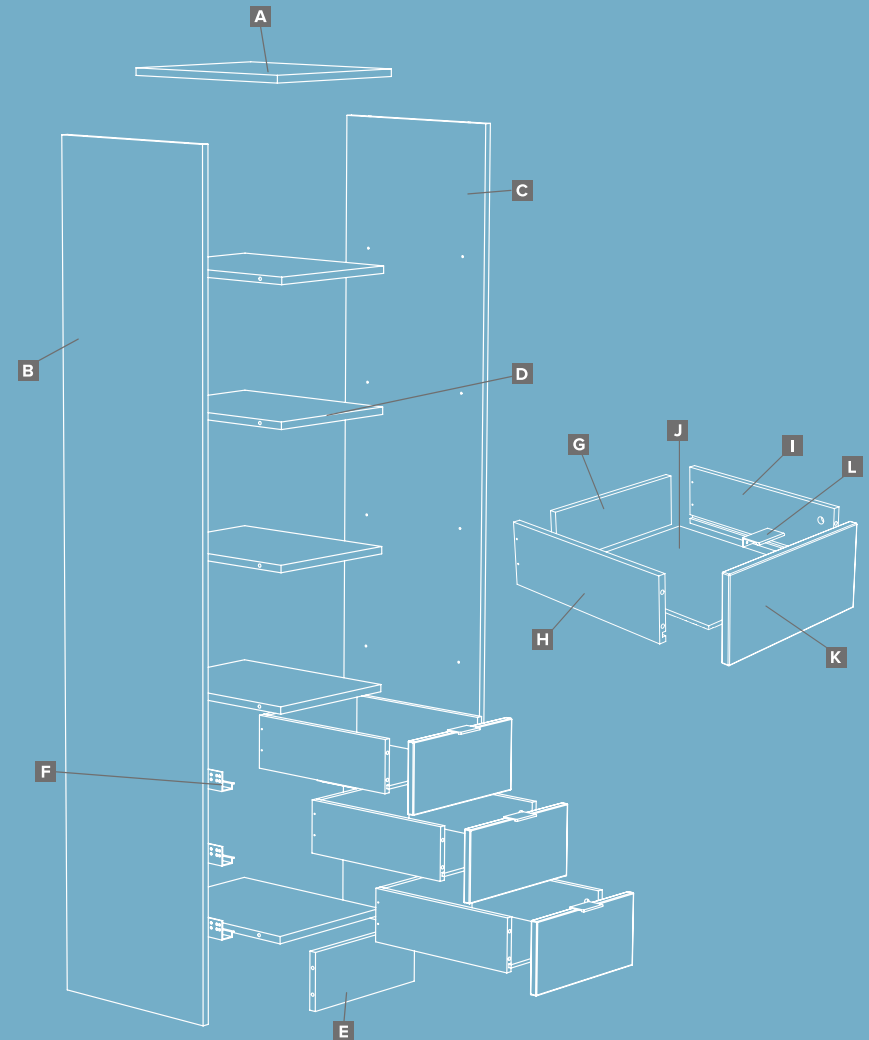
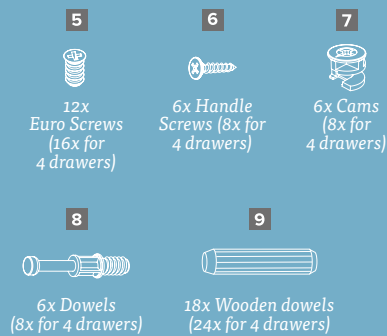
CONTENTS:

- A** 1x Top panel
- B** 1x Side panel (left)
- C** 1x Side panel (right)
- D** 5x Shelves
(4x for 4 drawers)
- E** 1x Plinth panel
- F** Soft close drawer runners
 - 3 Drawer Unit
 - 3x left, 3x right
 - 4 Drawer Unit
 - 4x left, 4x right
- G** Drawer backs
 - 3 Drawer Unit
 - x3
 - 4 Drawer Unit
 - x4
- H** Drawer sides (left)
 - 3 Drawer Unit
 - 3x left
 - 4 Drawer Unit
 - 4x left
- I** Drawer sides (right)
 - 3 Drawer Unit
 - 3x
 - 4 Drawer Unit
 - 4x
- J** Drawer bases
 - 3 Drawer Unit
 - x3
 - 4 Drawer Unit
 - x4
- K** Drawer fronts
 - 3 Drawer Unit
 - x3
 - 4 Drawer Unit
 - x4
- L** Drawer handles
 - 3 Drawer Unit
 - x3
 - 4 Drawer Unit
 - x4

TOWER UNIT PACK



DRAWER PACK



RECOMMENDED:

- TOOLS: Screwdriver
- TWO PERSON BUILD



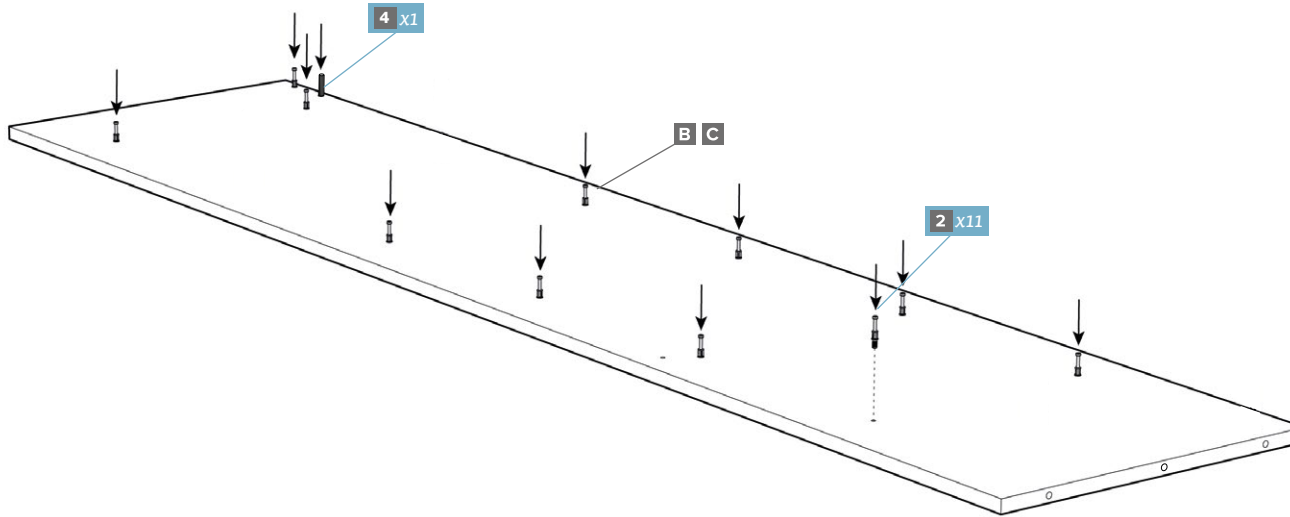
We recommend you use the Wall Mounting Brackets provided to fix the Tower Unit to a wall (where possible). This will prevent the unit being pulled over. Use suitable fixings.

spaceslide®
we make room

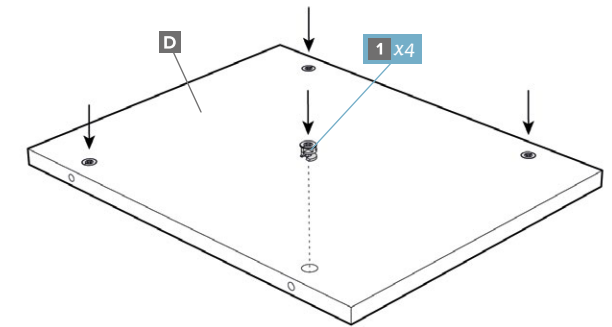
V1.1

PLEASE NOTE THE 3 AND 4 DRAWER TOWER UNIT ARE THE SAME IN CONSTRUCTION. WE HAVE USED THE 3 DRAWER TOWER UNIT AS AN EXAMPLE.

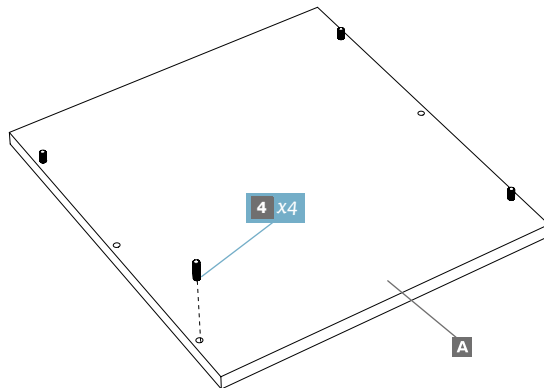
Note: B panel shown



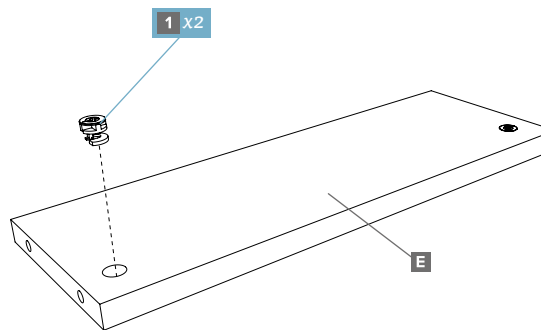
1 Lay panels (B&C) on a flat surface. Fit cams & dowels to both panels.



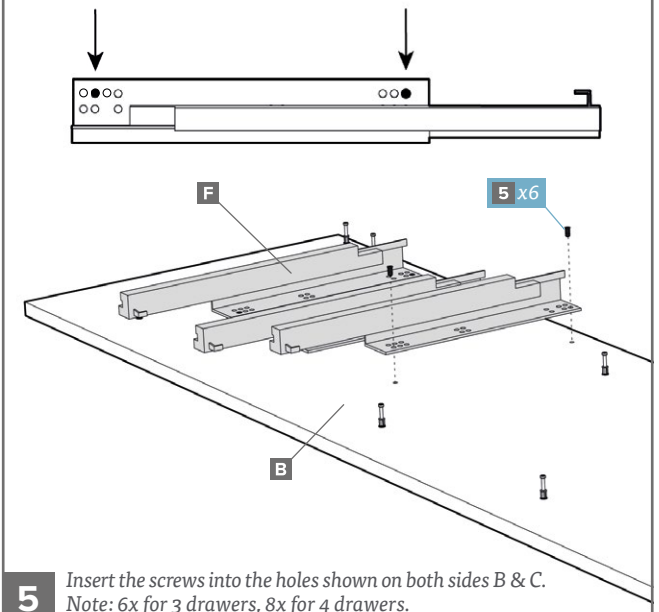
2 Apply to all panels.



3



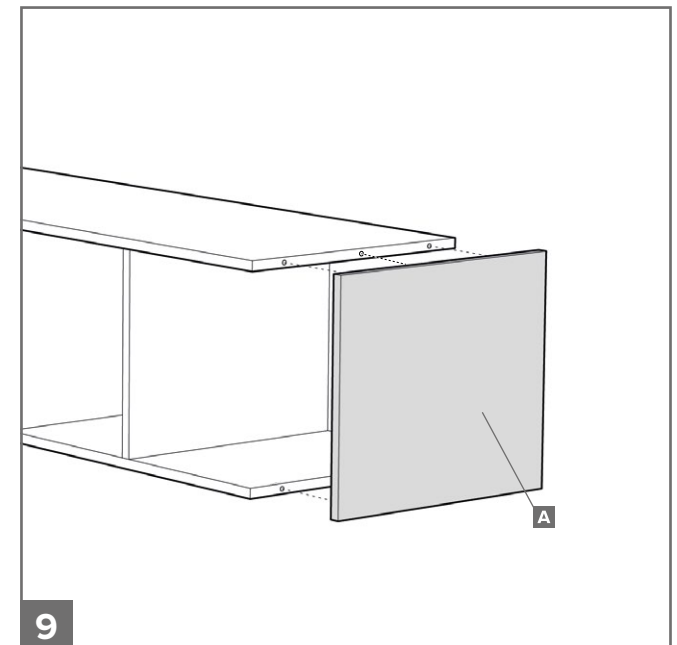
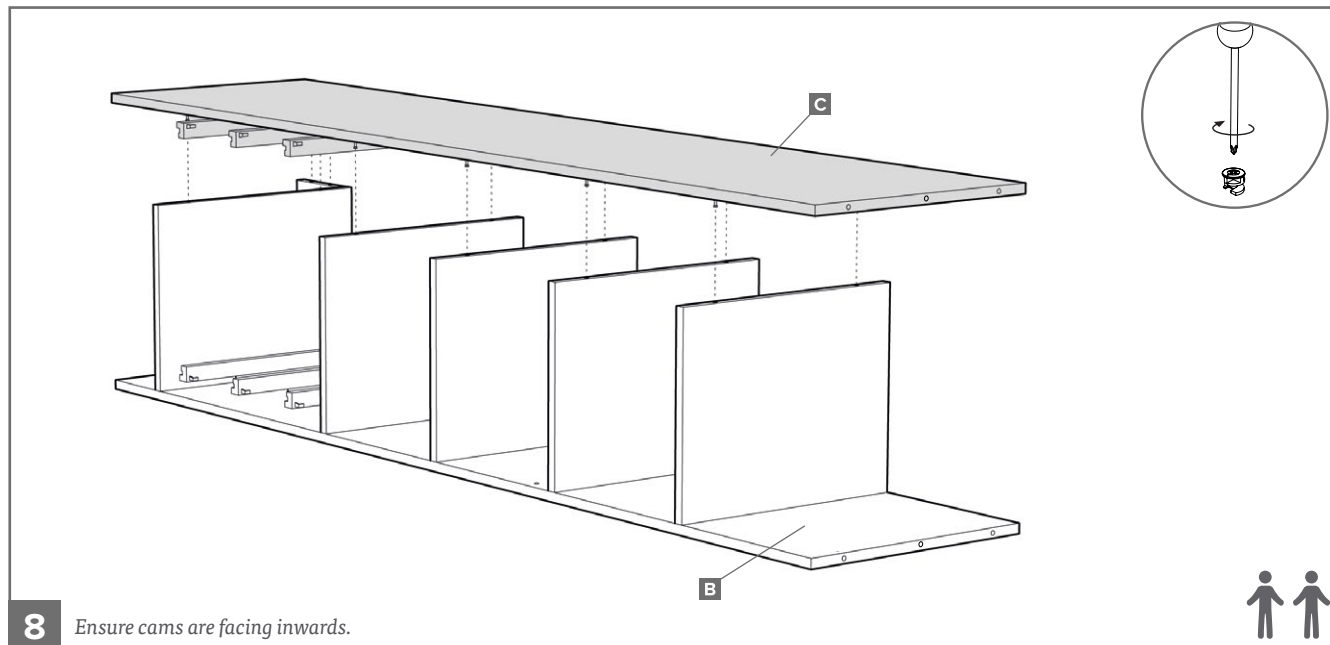
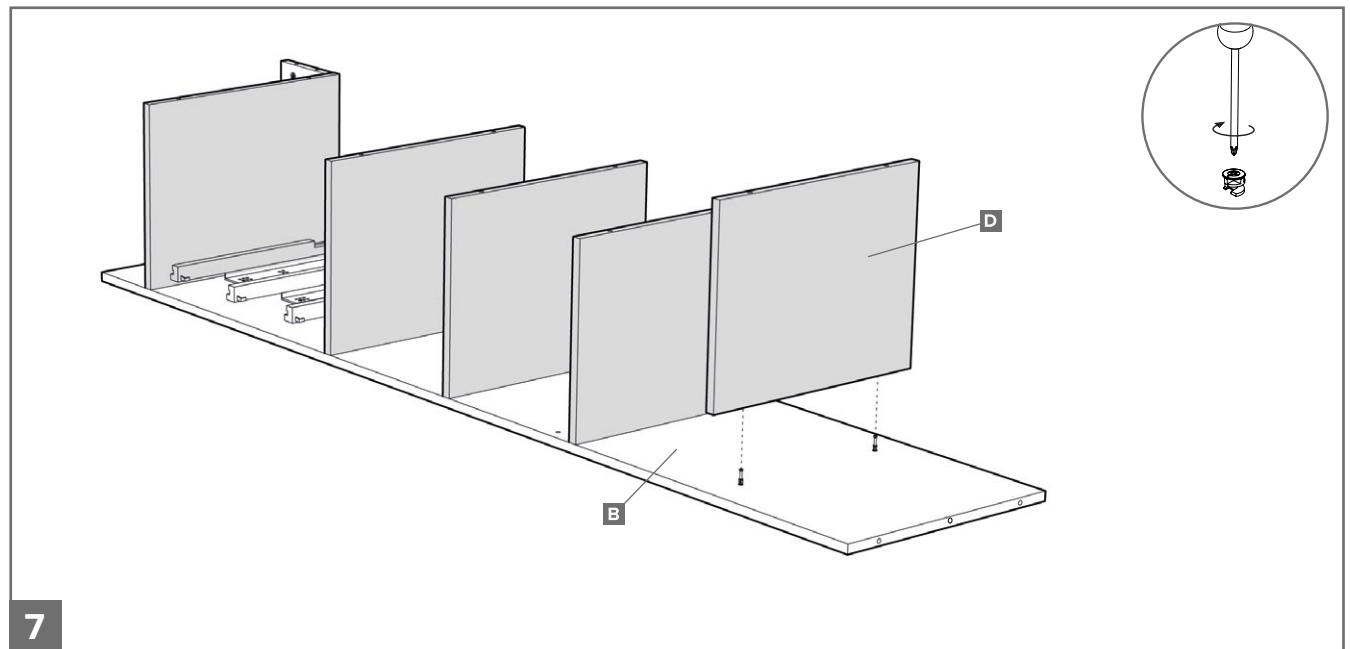
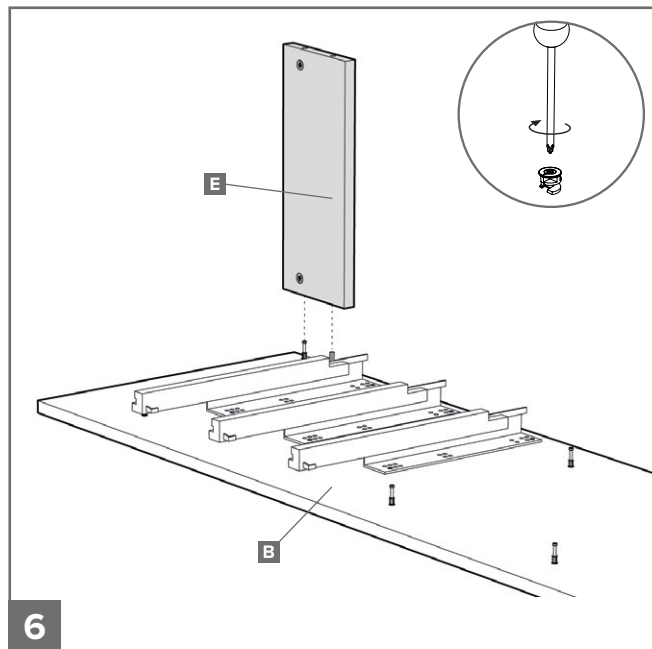
4



5

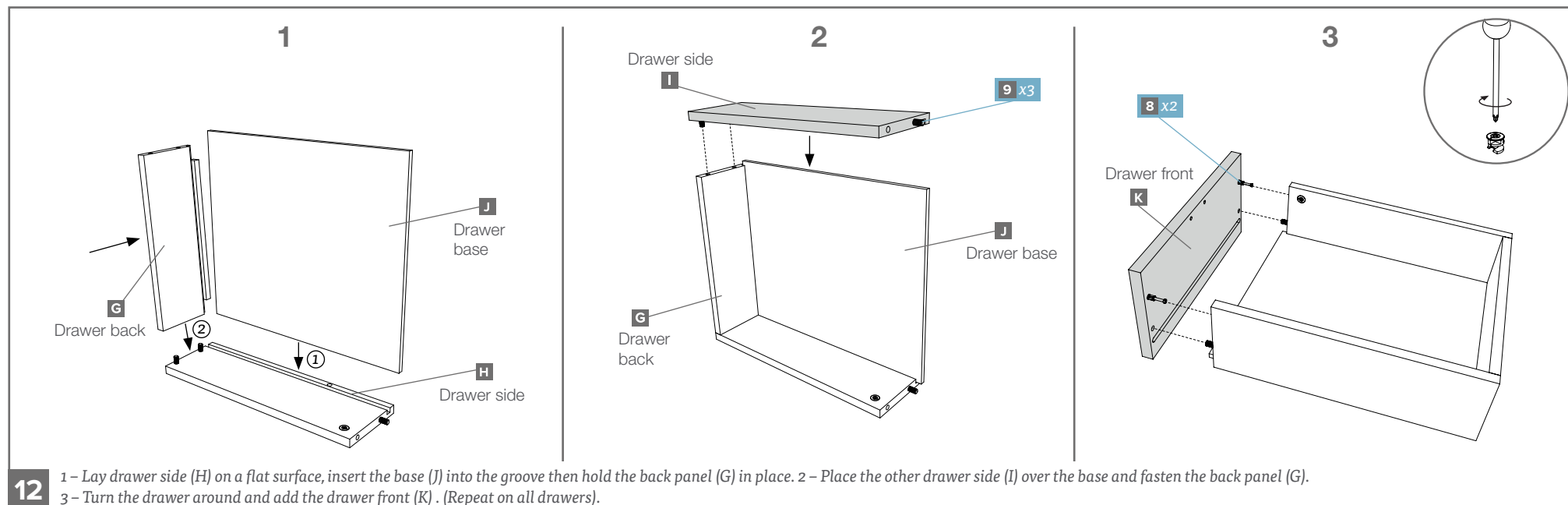
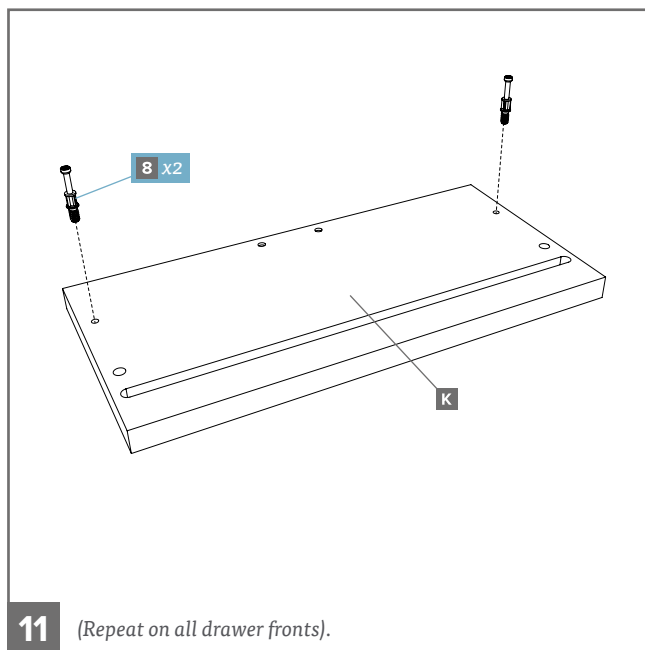
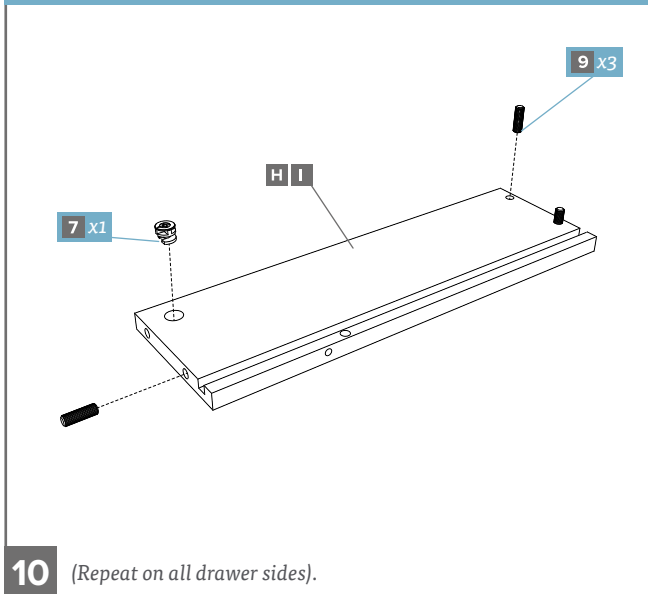
Insert the screws into the holes shown on both sides B & C.
Note: 6x for 3 drawers, 8x for 4 drawers.

PLEASE NOTE THE 3 AND 4 DRAWER TOWER UNIT ARE THE SAME IN CONSTRUCTION. WE HAVE USED THE 3 DRAWER TOWER UNIT AS AN EXAMPLE.

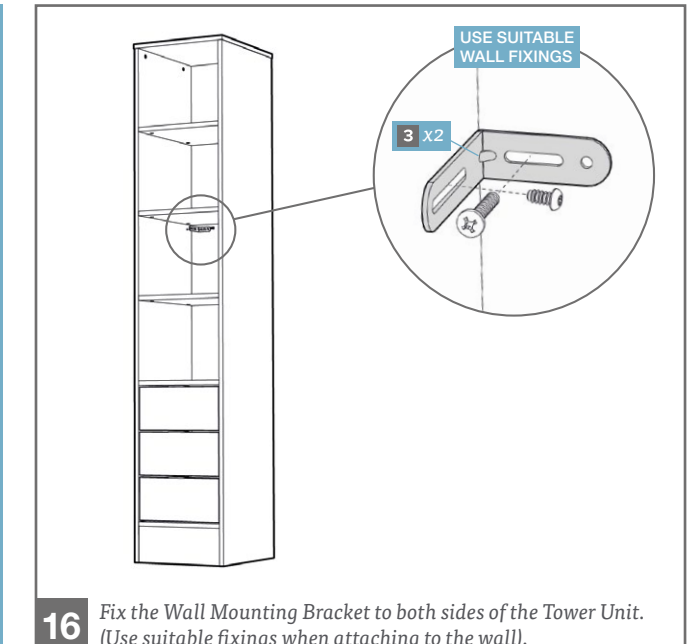
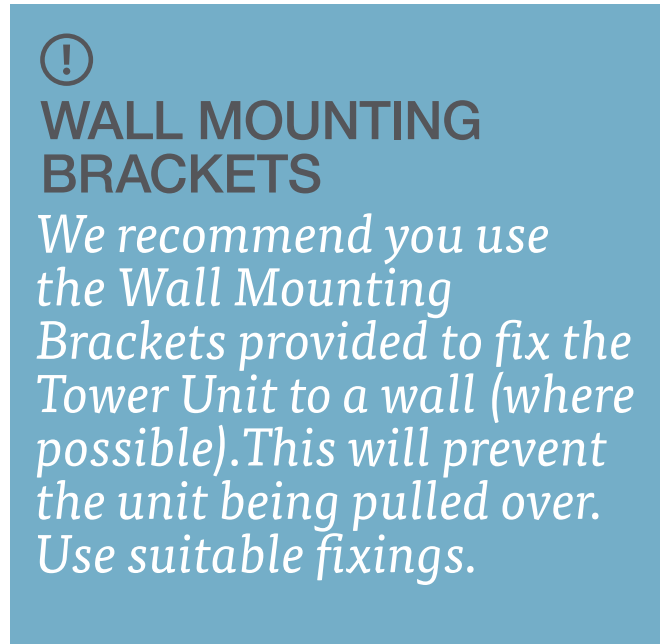
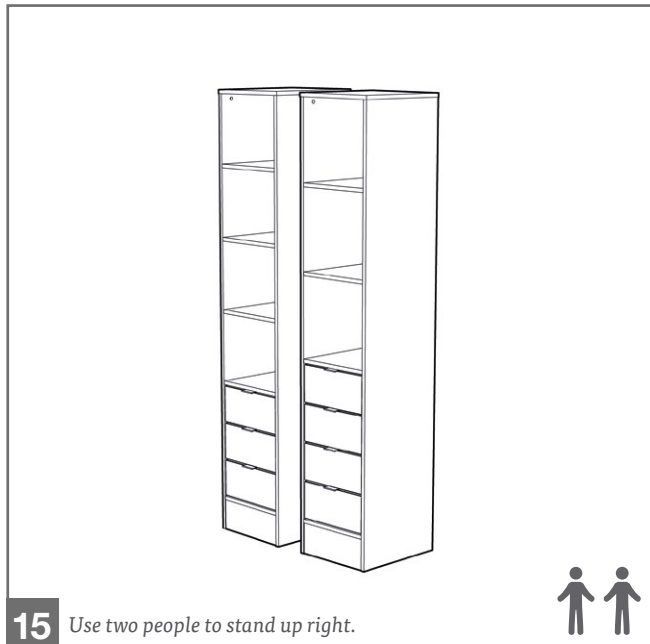
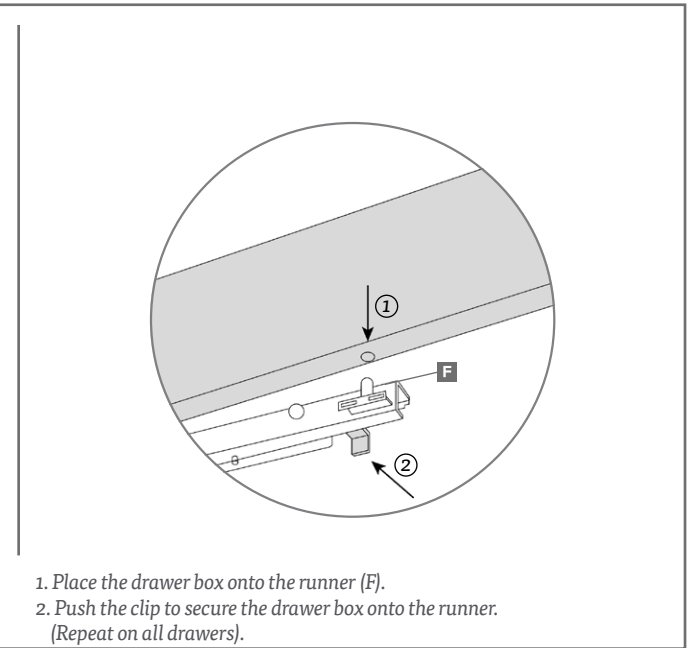
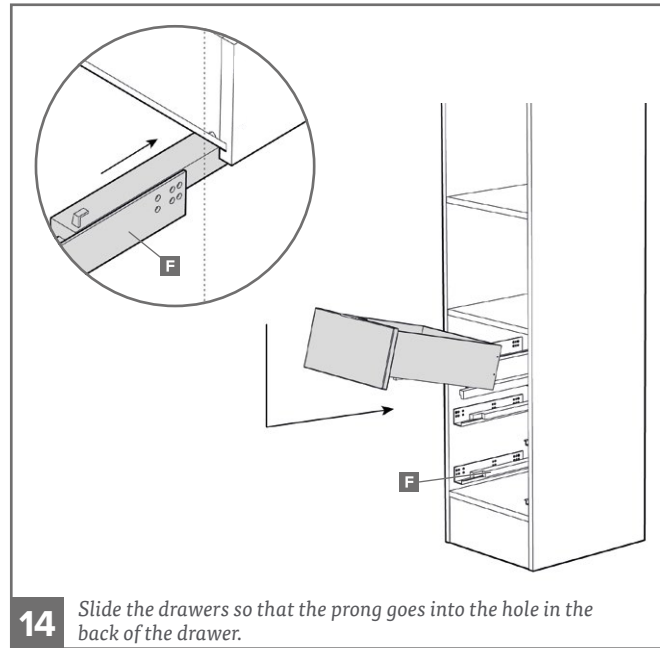
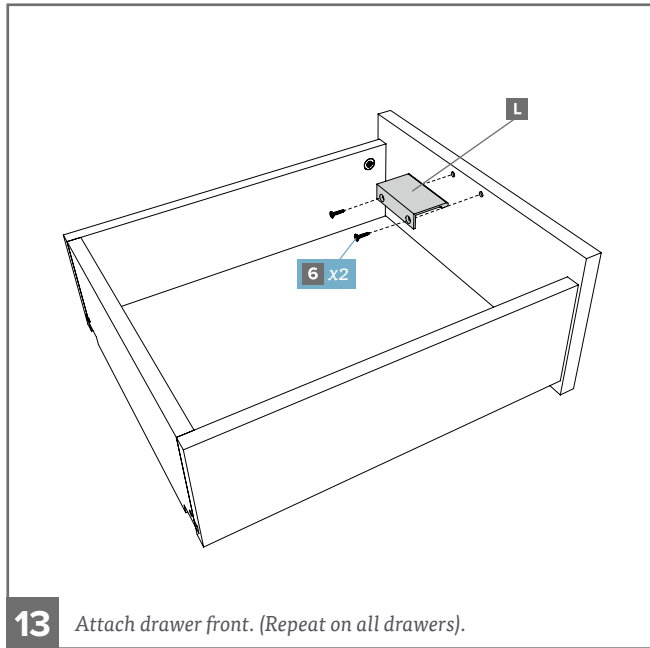


PLEASE NOTE THE 3 AND 4 DRAWER TOWER UNIT ARE THE SAME IN CONSTRUCTION. WE HAVE USED THE 3 DRAWER TOWER UNIT AS AN EXAMPLE.

MAKING THE DRAWERS



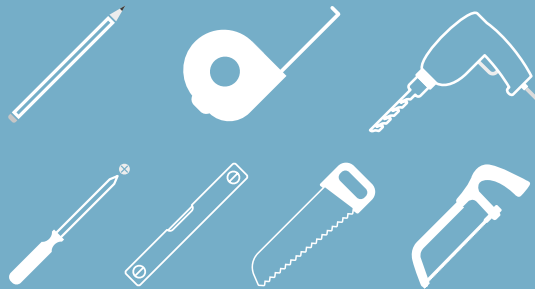
PLEASE NOTE THE 3 AND 4 DRAWER TOWER UNIT ARE THE SAME IN CONSTRUCTION. WE HAVE USED THE 3 DRAWER TOWER UNIT AS AN EXAMPLE.



HOW TO FIT TOWER UNIT

Assembly Instructions

TOOLS REQUIRED:



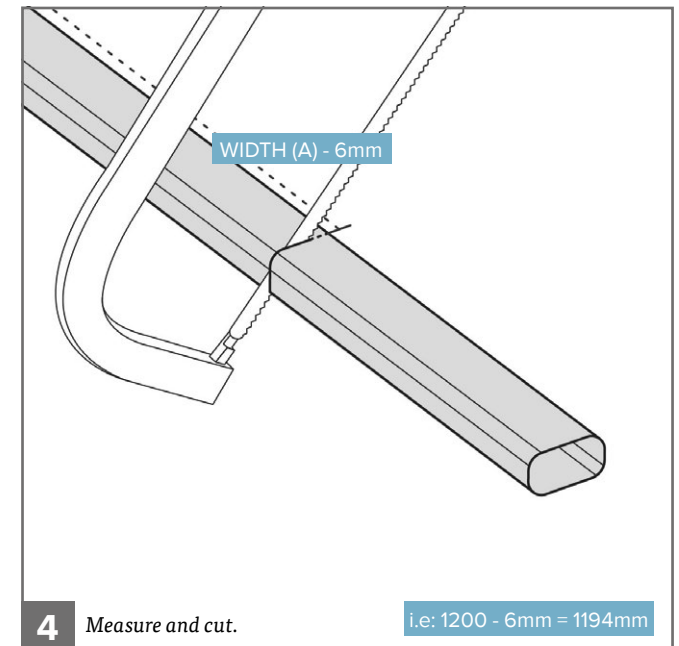
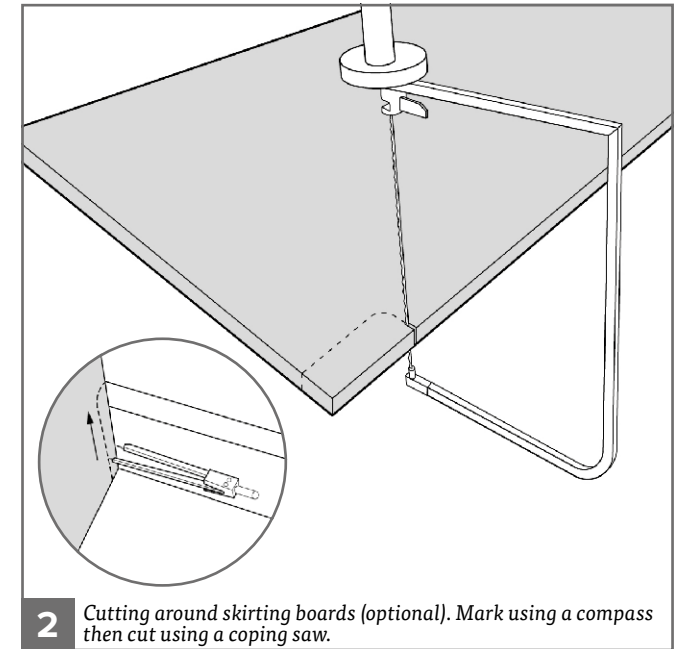
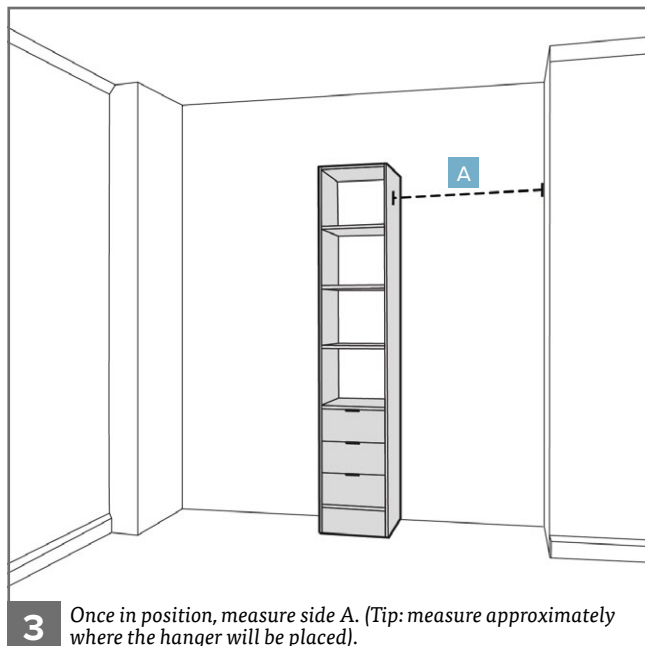
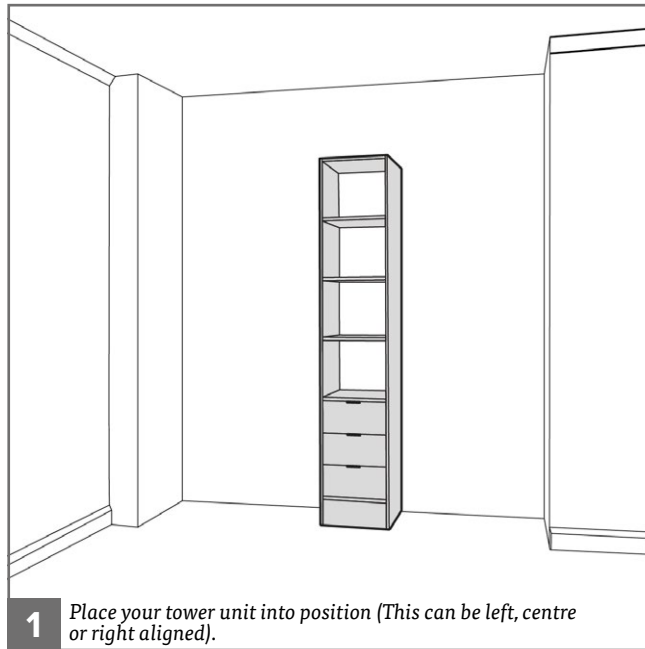
Please check your opening for any hidden electrical wires and water pipes before / screwing.

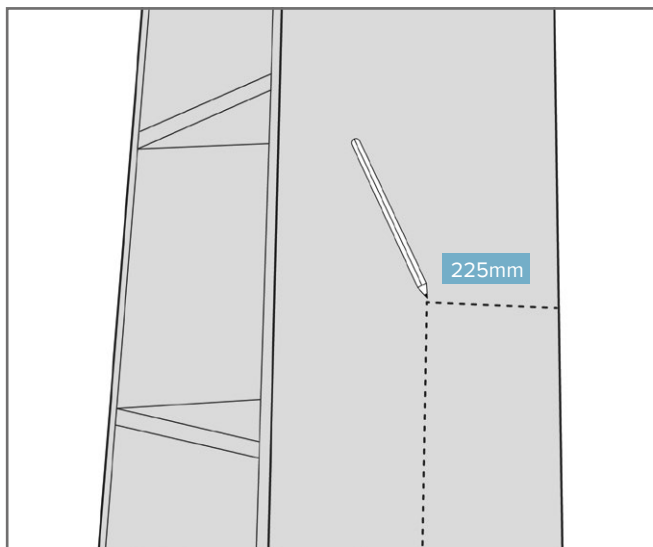


Screws not supplied. Use suitable screws and plugs.

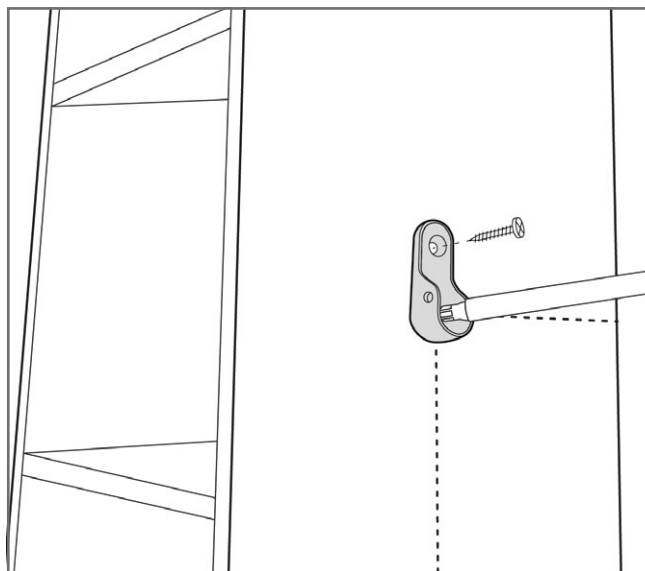
spaceslide
we make room

V1

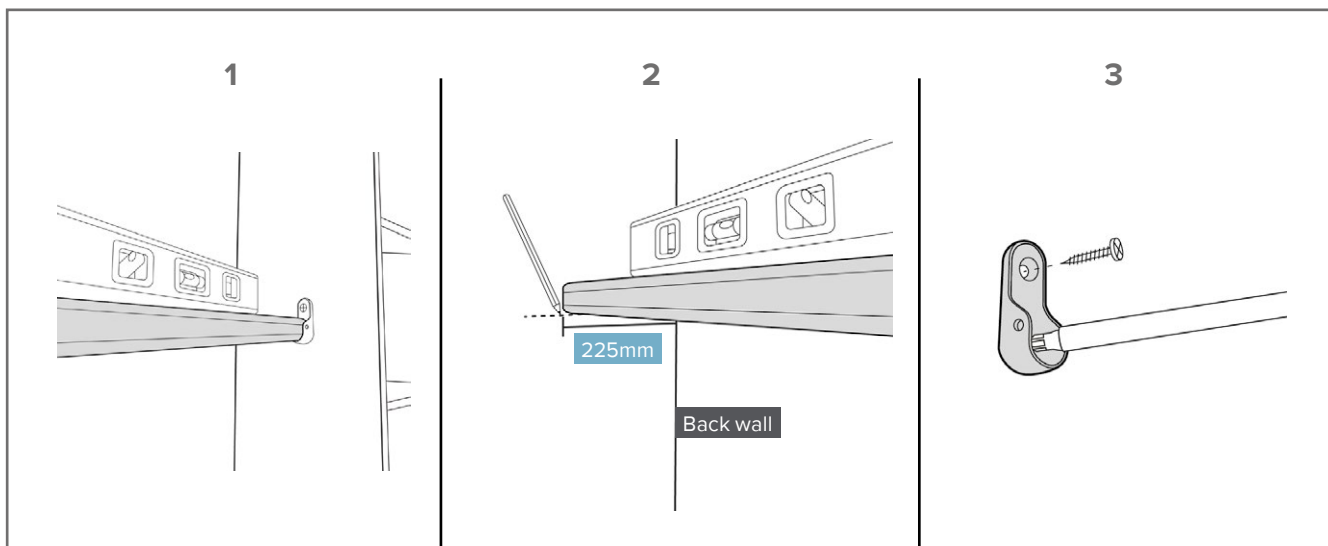




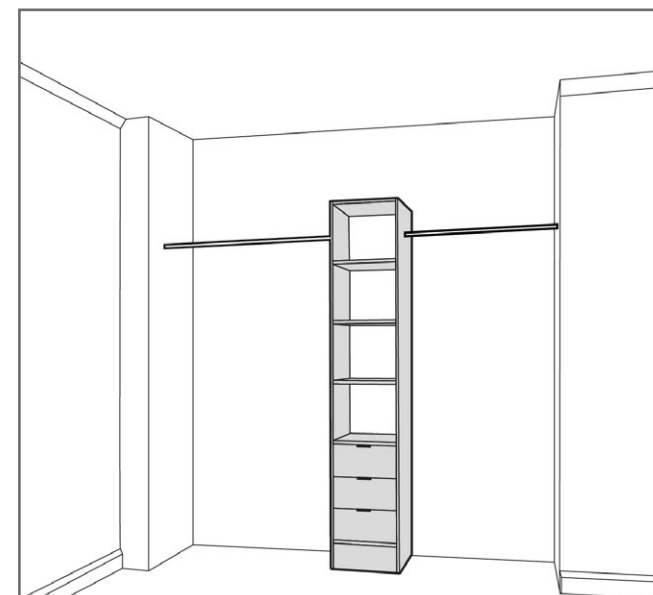
5 Mark the position of the hanger bar. By measuring in 225mm to the centre of the tower unit.



6 Fix first bracket through both holes. (We recommend 16mm screws).



7 Fitting the second hanger bar. 1- Place hanger bar into first bracket and level up. 2-Make sure to mark position on the side wall 225mm from the back wall. 3-Then fix into position.



8 Repeat 3-7 for remaining hanger bars.