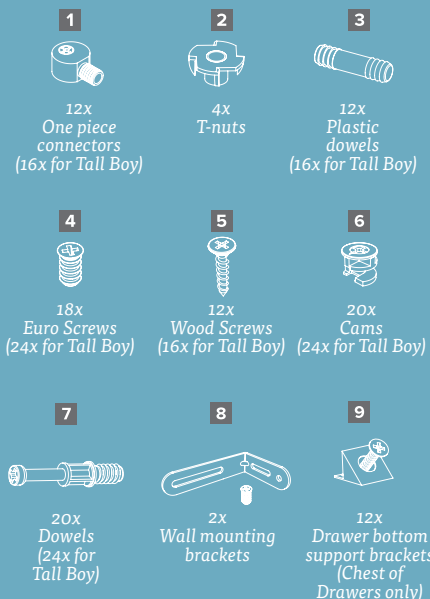


CHEST OF DRAWERS & TALL BOY

Assembly Instructions

CHEST OF DRAWERS & TALL BOY CONTENTS:

- A** 1x Top panel
- B** 2x Back panels
(1x for Tall Boy)
- C** 1x Side panel (left)
- D** 1x Side panel (right)
- E** 1x Base
- F** 4x Legs
- G** 2x Drawer infills
(3x for Tall Boy)
- H** 2x Infill covers
(3x for Tall Boy)
- I** 3x Drawer sides (left)
(4x for Tall Boy)
- J** 3x Drawer sides (right)
(4x for Tall Boy)
- K** 3x Drawer backs
(4x for Tall Boy)
- L** 3x Drawer fronts
(4x for Tall Boy)
- M** 3x Drawer bases
(4x for Tall Boy)
- N** 6x Soft close clips (3x left, 3x right)
(8x for Tall Boy, 4x left, 4x right)
- O** 6x Soft close drawer runners (3x left, 3x right)
(8x for Tall Boy, 4x left, 4x right)



RECOMMENDED:

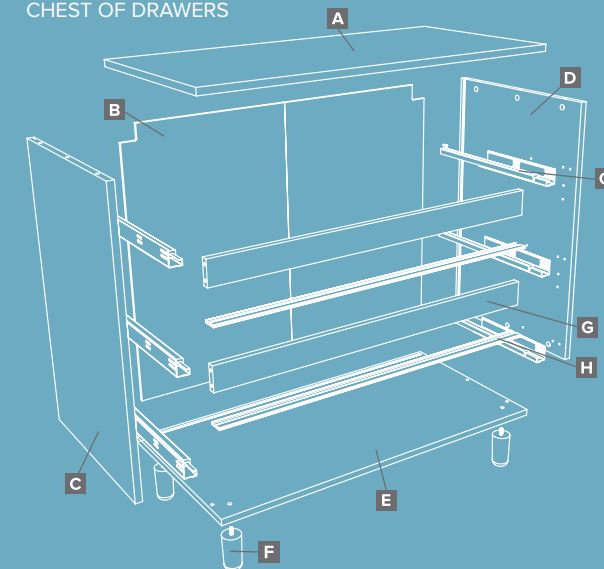
- TOOLS: Screwdriver & Hammer
- TWO PERSON BUILD



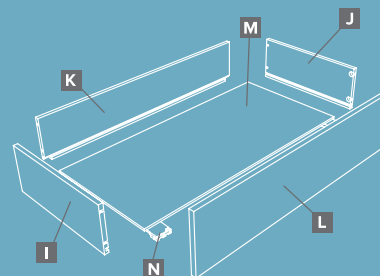
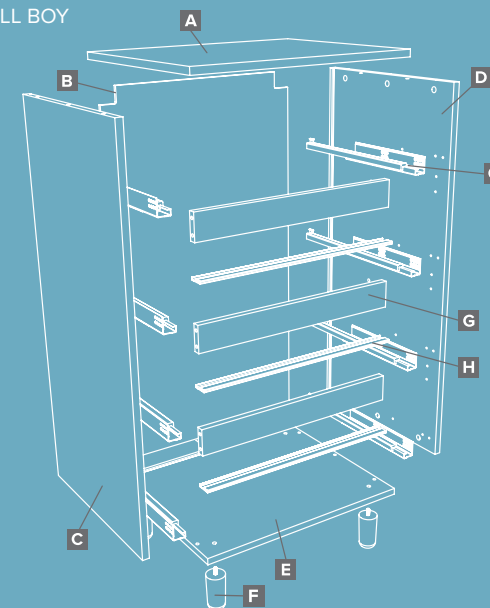
We recommend you use the Wall Mounting Brackets provided to fix the Chest of Drawers/ Tall Boy to a wall (where possible). This will prevent the unit being pulled over. Use suitable fixings.

spaceslide®
we make room

CHEST OF DRAWERS

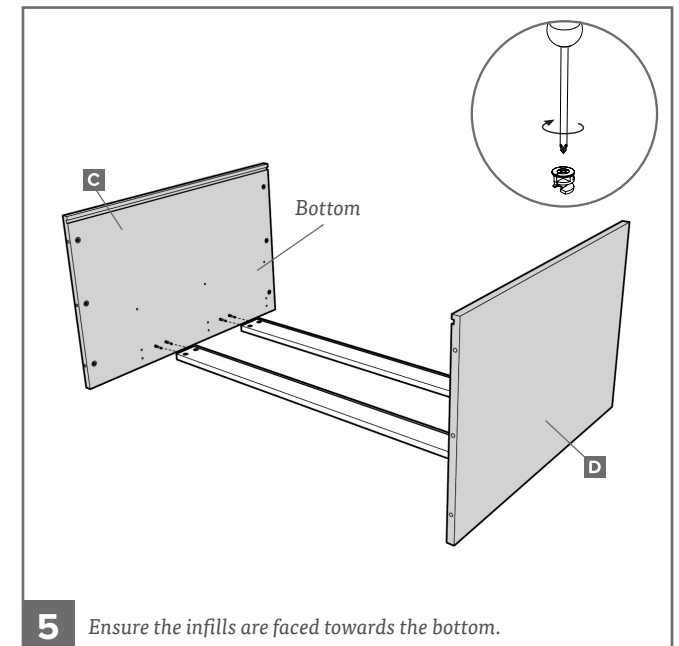
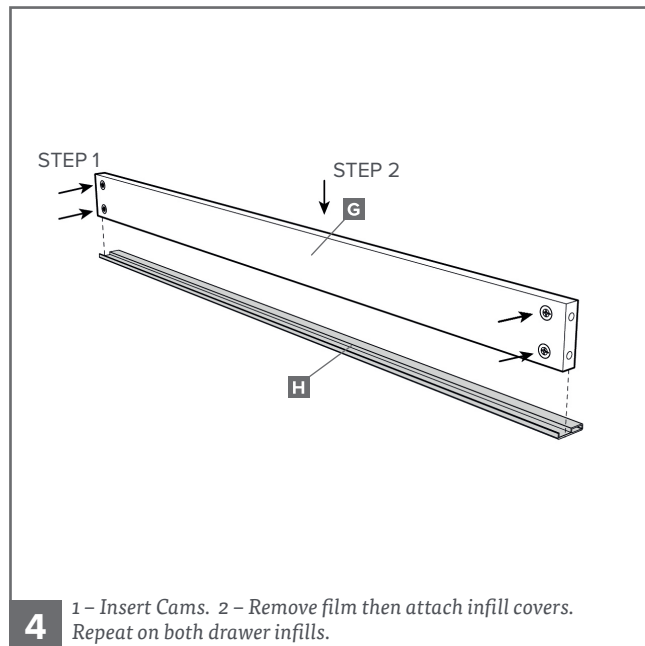
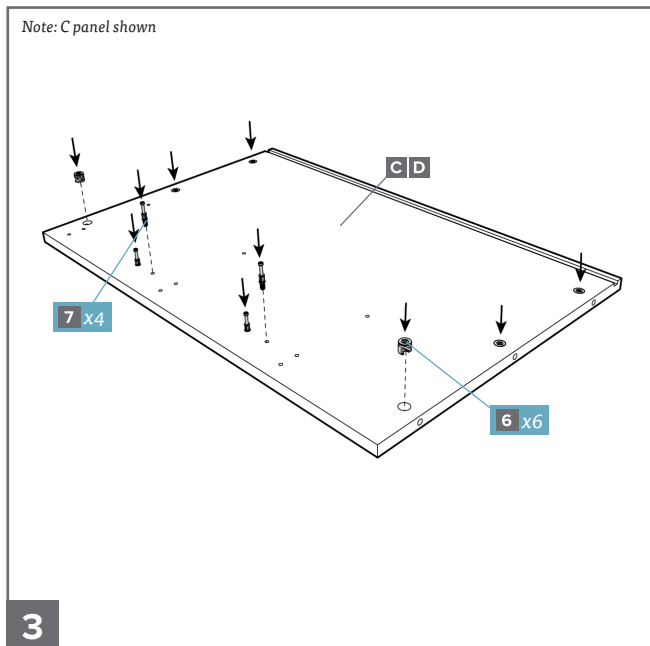
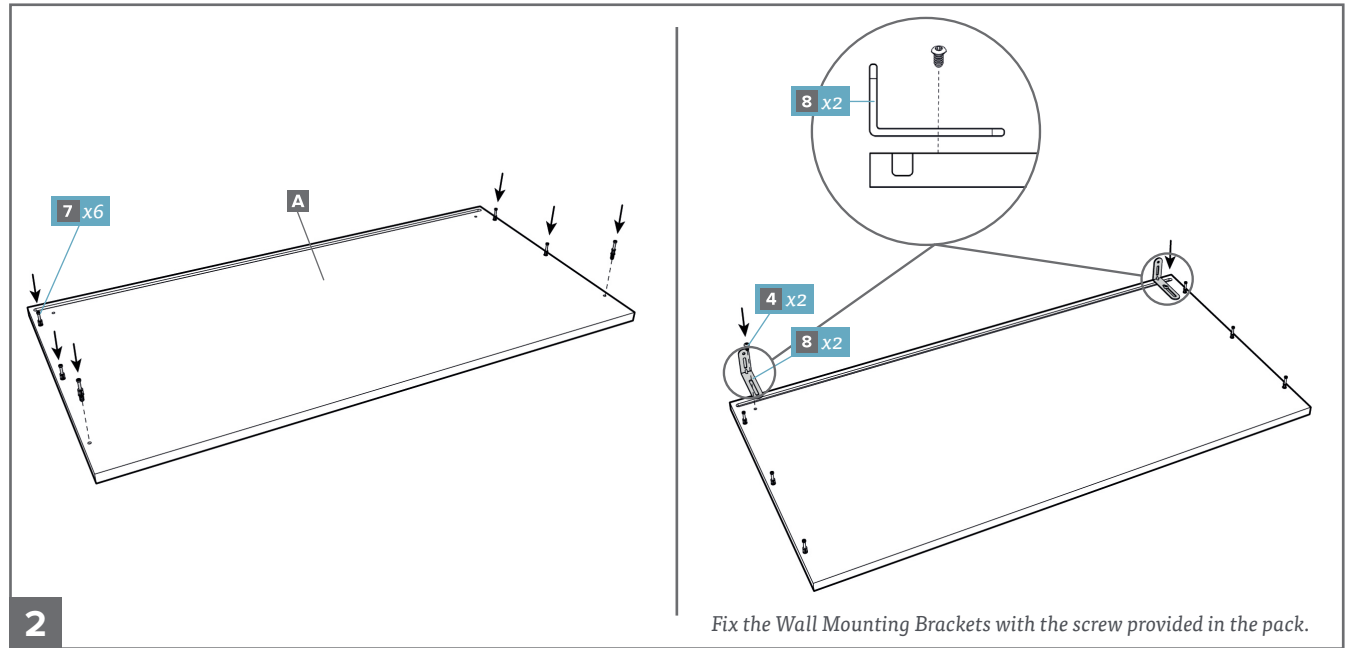
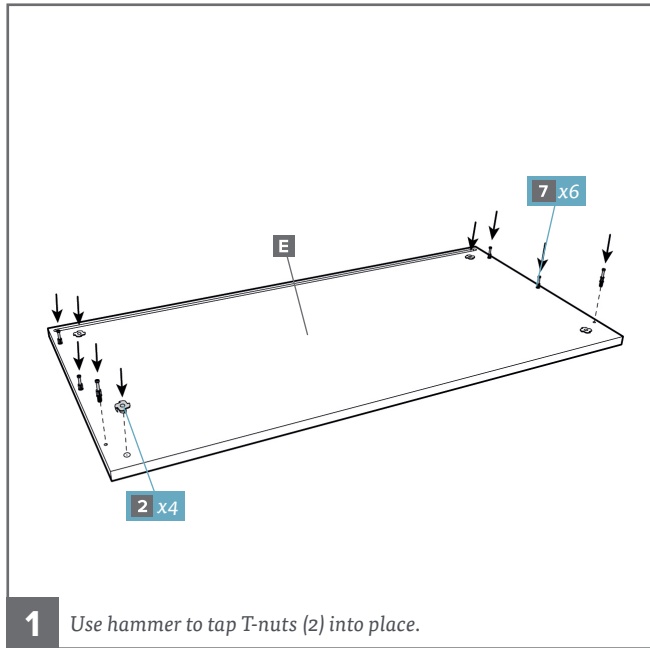


TALL BOY

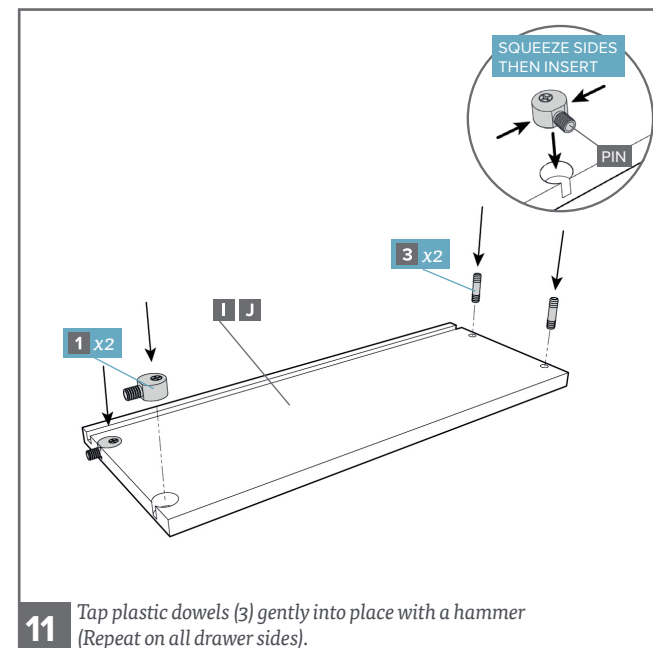
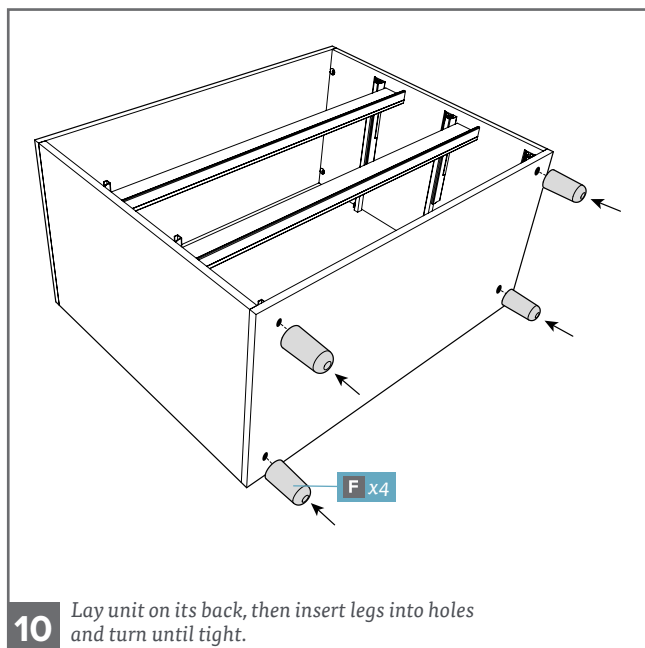
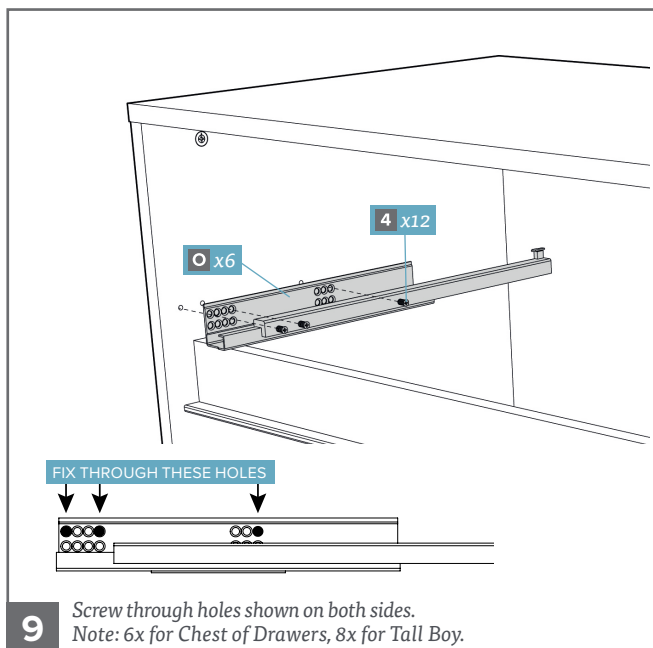
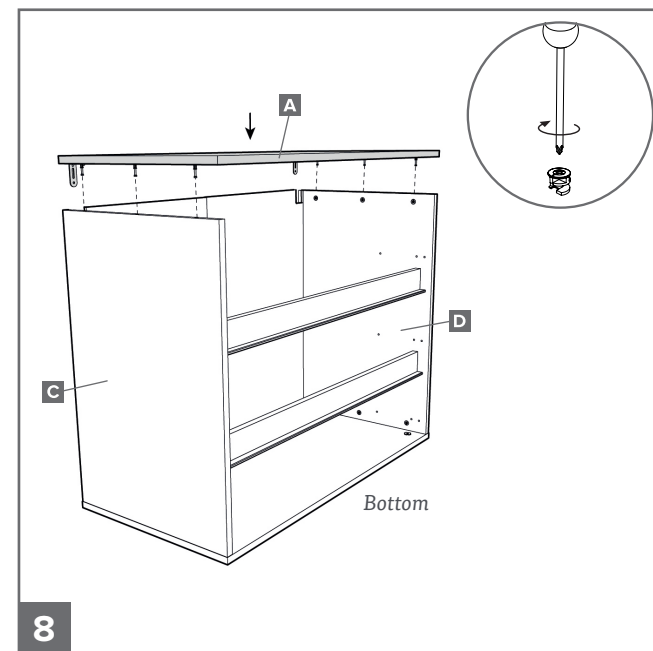
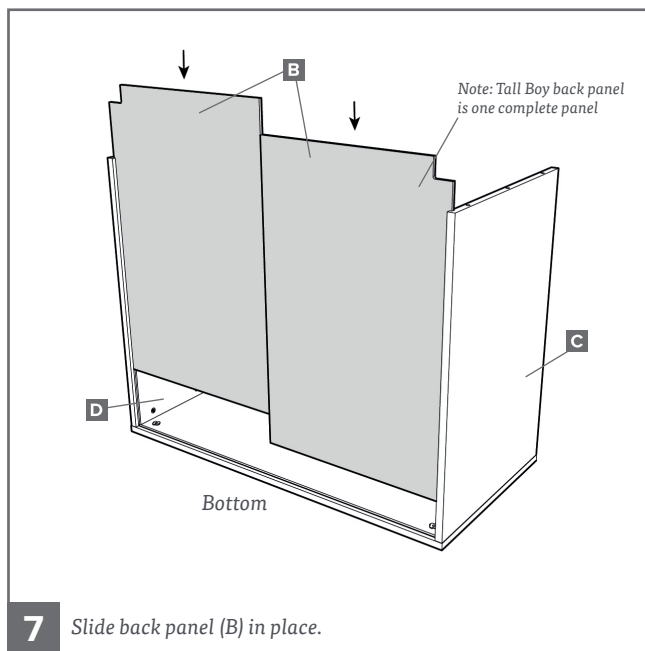
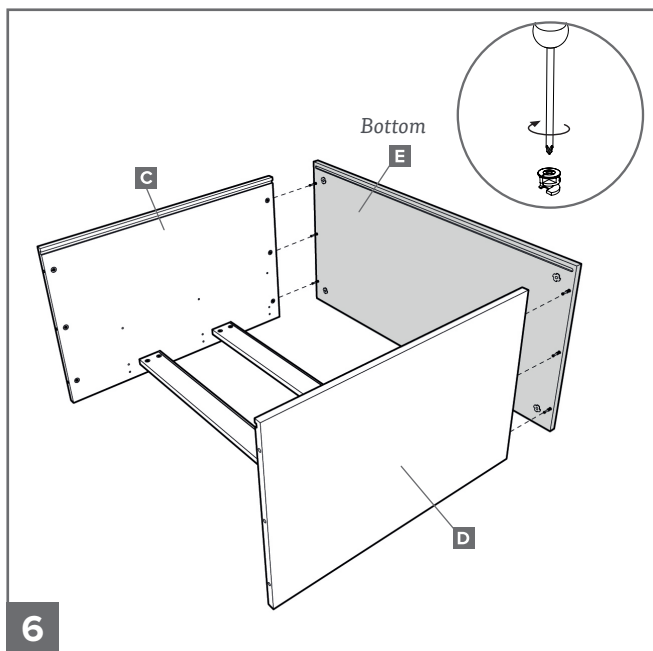


V2

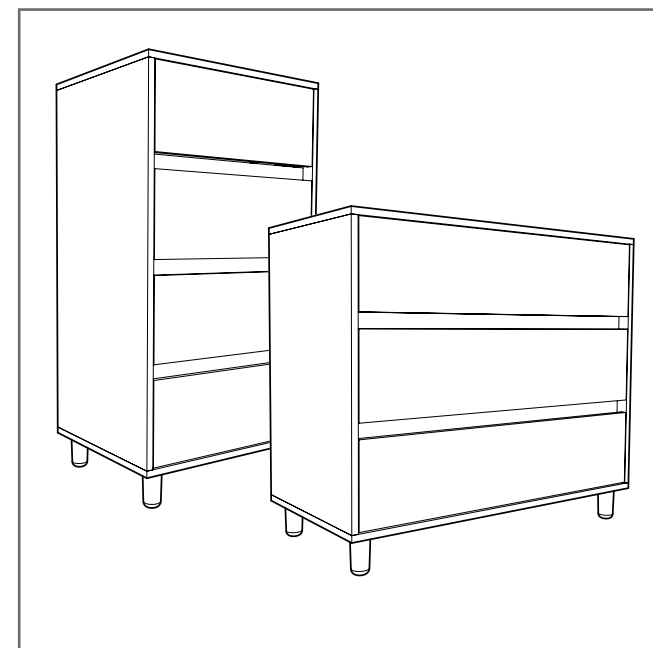
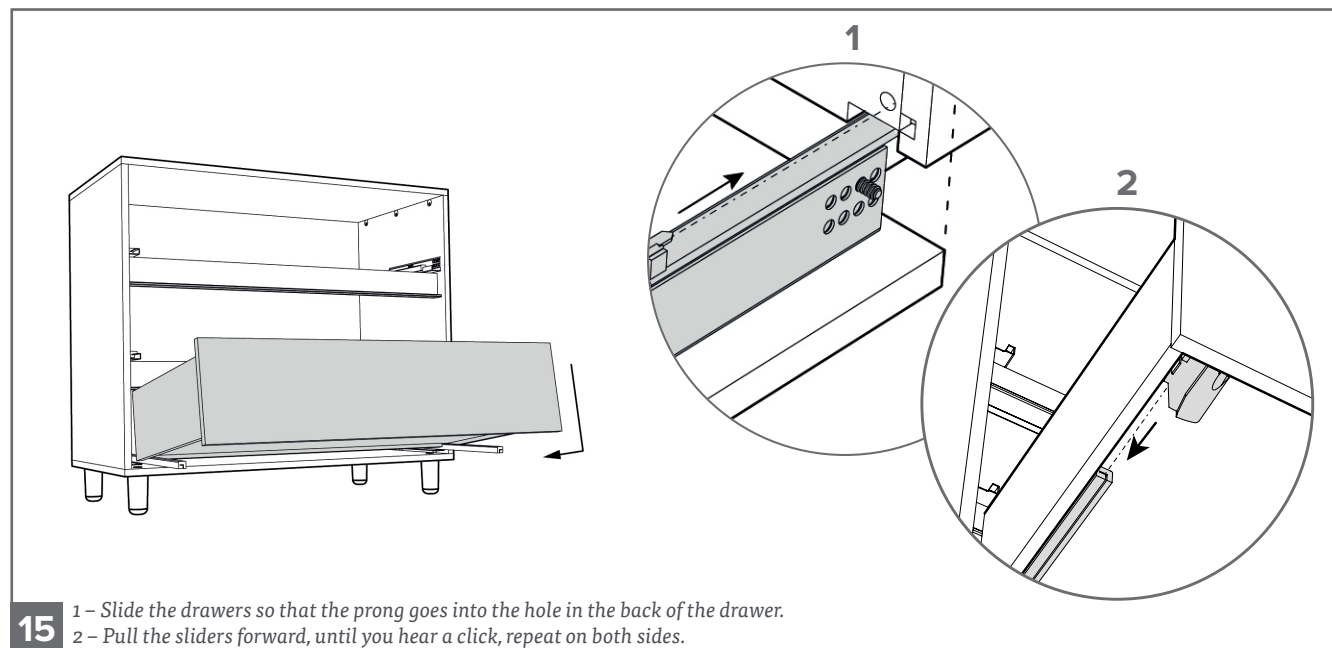
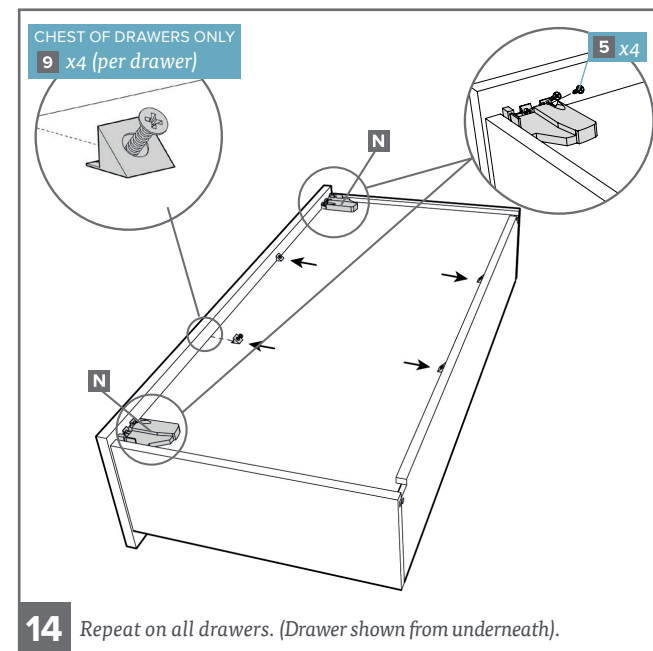
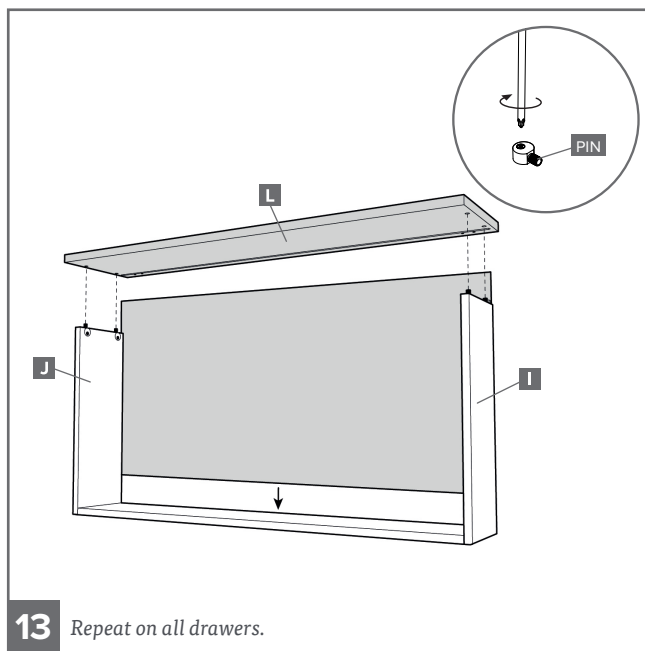
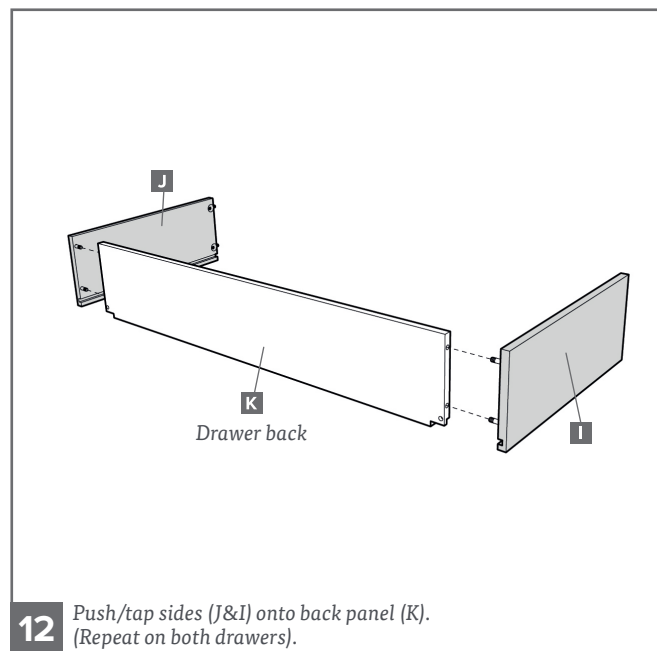
PLEASE NOTE THE CHEST OF DRAWERS AND TALL BOY ARE THE SAME IN CONSTRUCTION. WE HAVE USED THE CHEST OF DRAWERS AS AN EXAMPLE.



PLEASE NOTE THE CHEST OF DRAWERS AND TALL BOY ARE THE SAME IN CONSTRUCTION. WE HAVE USED THE CHEST OF DRAWERS AS AN EXAMPLE.



PLEASE NOTE THE CHEST OF DRAWERS AND TALL BOY ARE THE SAME IN CONSTRUCTION. WE HAVE USED THE CHEST OF DRAWERS AS AN EXAMPLE.



PLEASE NOTE THE CHEST OF DRAWERS AND TALL BOY ARE THE SAME IN CONSTRUCTION. WE HAVE USED THE CHEST OF DRAWERS AS AN EXAMPLE.



WALL MOUNTING BRACKETS

We recommend you use the Wall Mounting Brackets provided to fix the Chest of Drawers/Tall Boy to a wall (where possible). This will prevent the unit being pulled over. Use suitable fixings.

