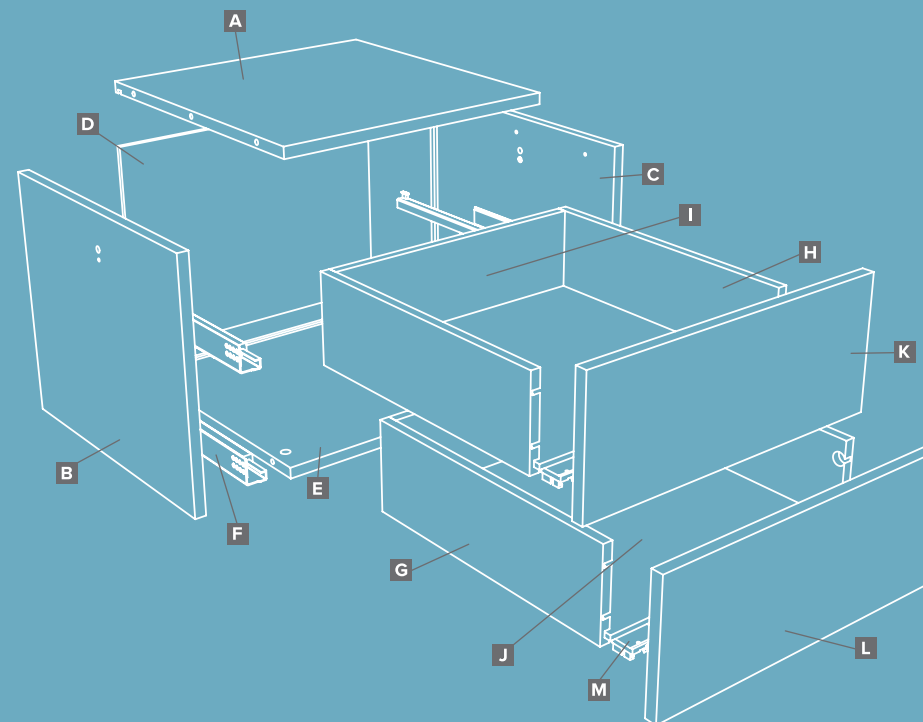
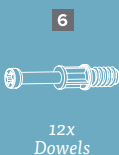


PREMIER DRAWER UNIT

Assembly Instructions

CONTENTS:

- A** 1x Top panel
- B** 1x Side panel (left)
- C** 1x Side panel (right)
- D** 1x Back panel
- E** 1x Base
- F** 4x Soft close drawer runners (2x left, 2x right)
- G** 2x Drawer side (left)
- H** 2x Drawer side (right)
- I** 2x Drawer back
- J** 2x Drawer base
- K** 1x Drawer front (top)
- L** 1x Drawer front (bottom)
- M** 4x Soft close clips (2x left, 2x right)

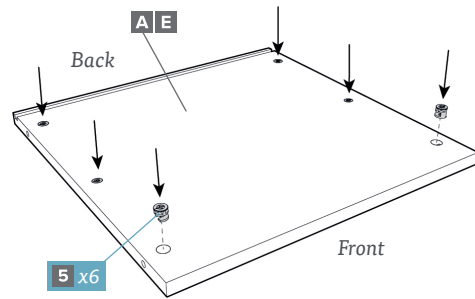


RECOMMENDED TOOLS: Screwdriver & Hammer

spaceslide®
we make room

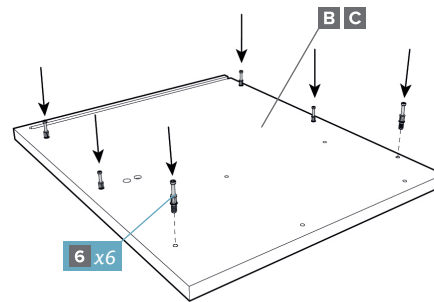
V2

Note: E panel shown

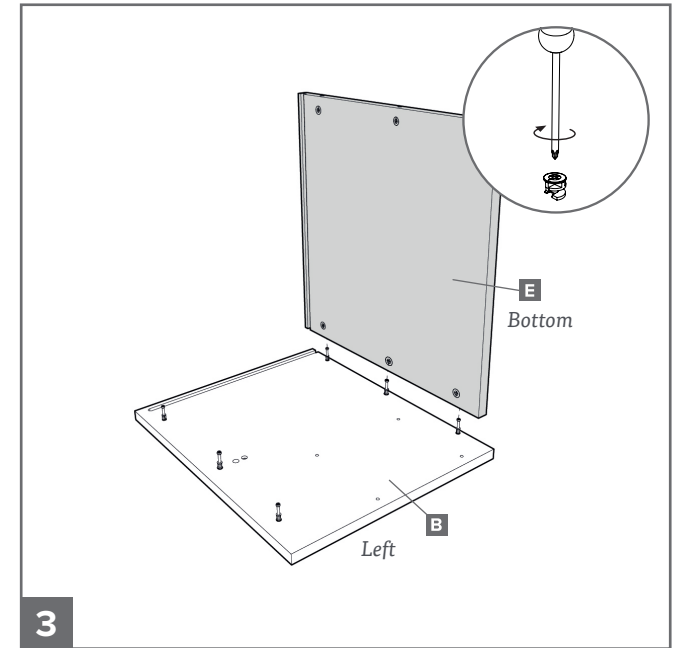


1 Note: Panel A is longer (front to back) than panel E.
A = top, E = bottom.

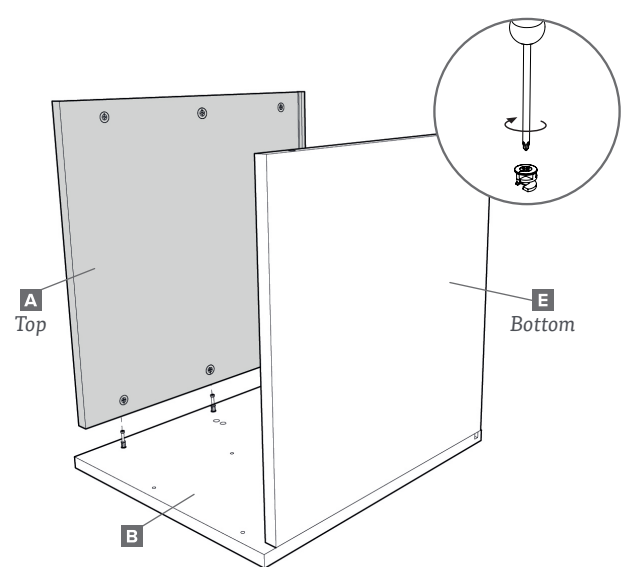
Note: B panel shown



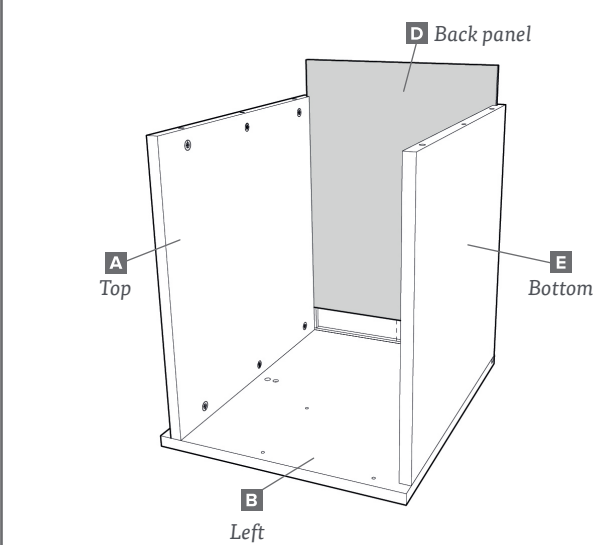
2



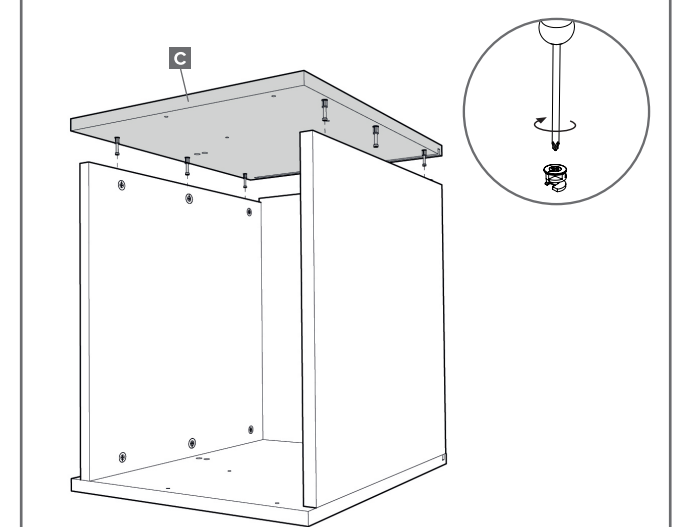
3



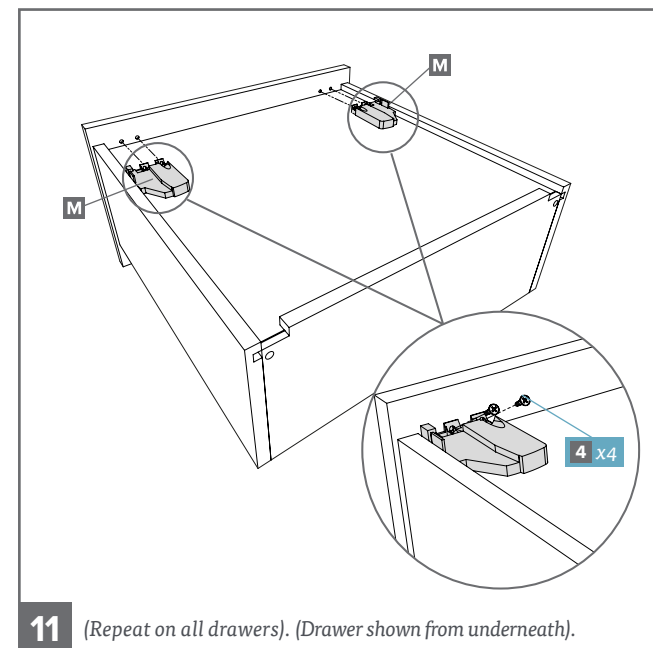
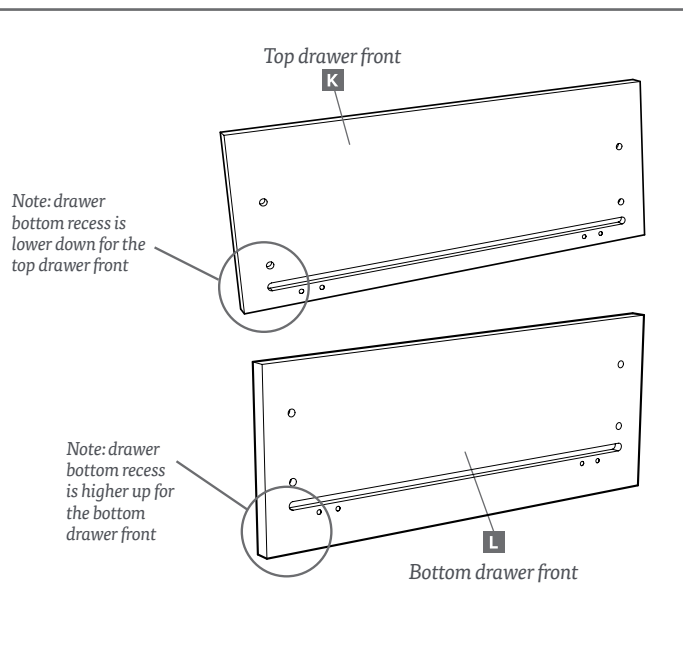
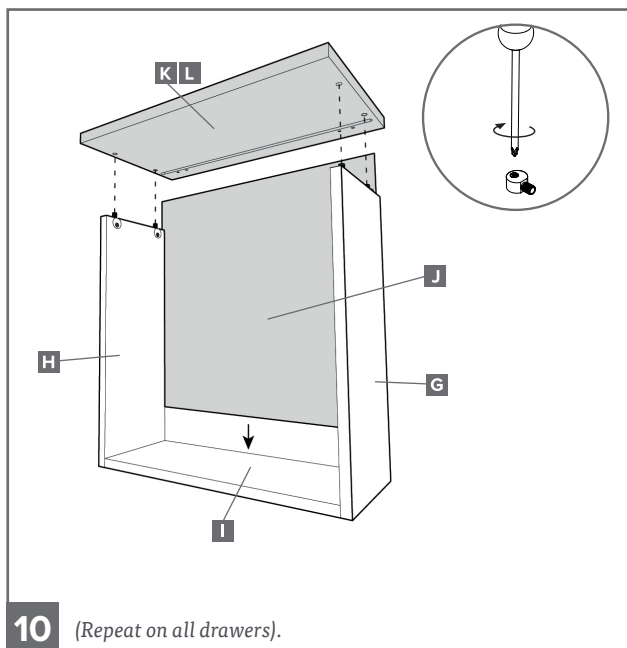
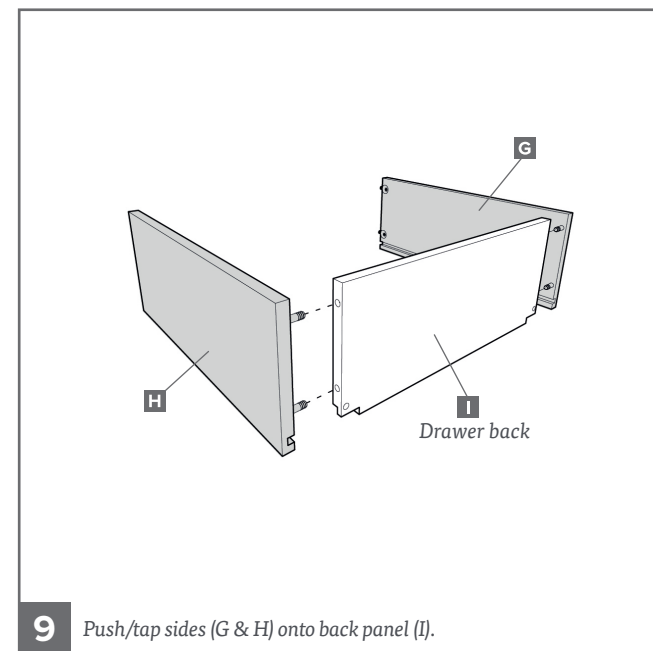
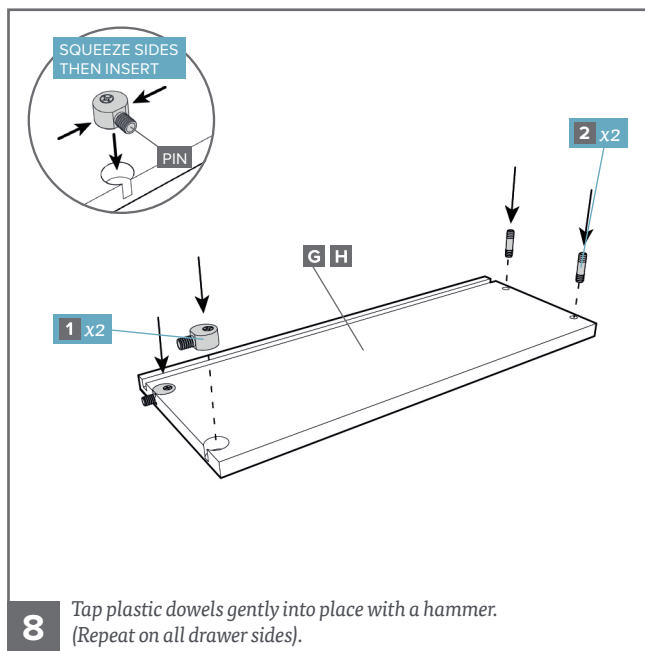
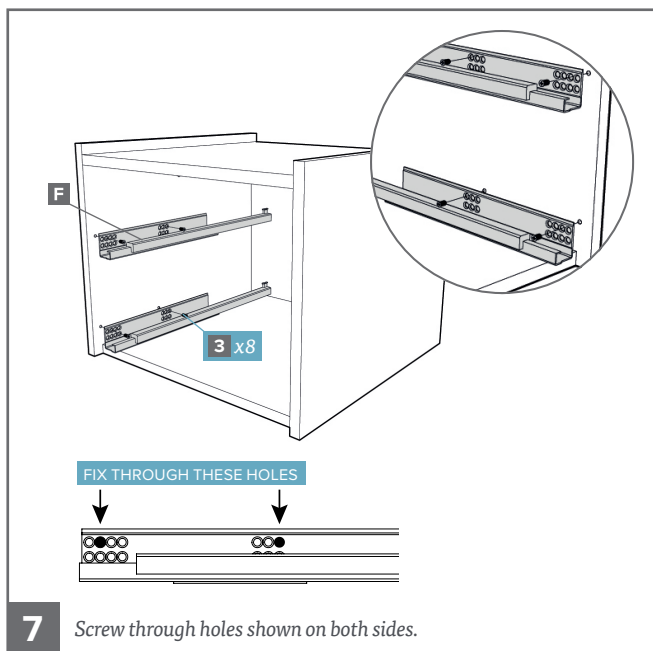
4 Push/tap into place and tighten the cam locks.

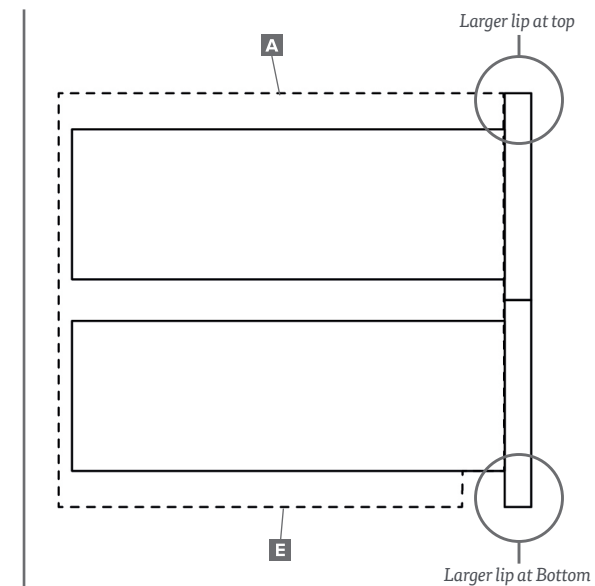
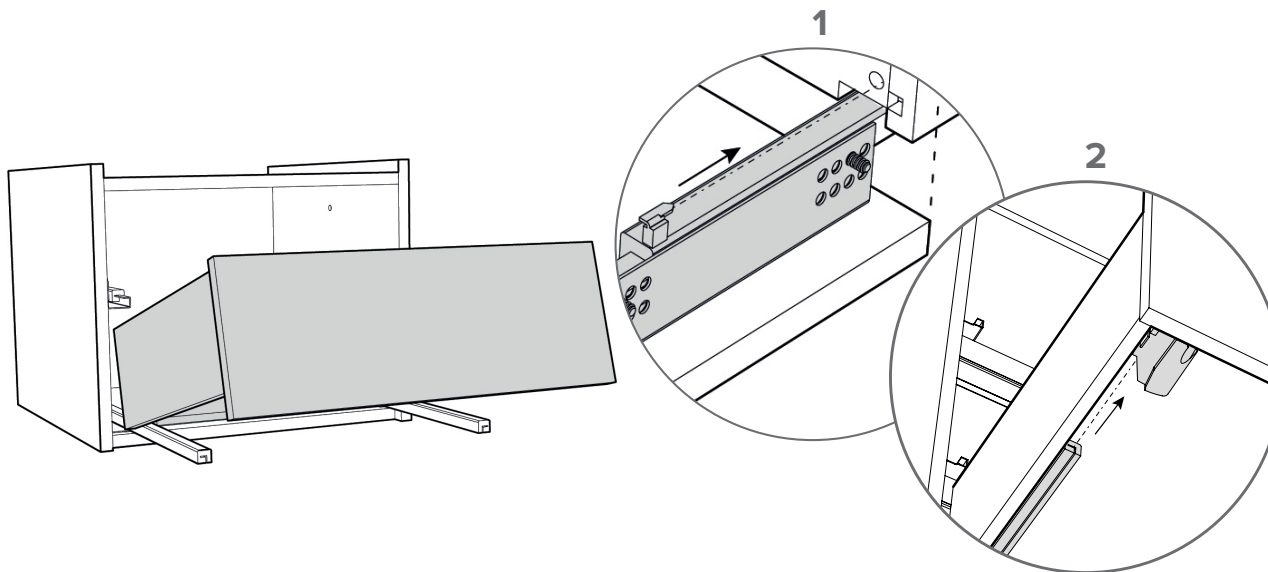


5



6 Push/tap into place and tighten the cam locks.





12 1 – Slide the drawers so that the prong goes into the hole in the back of the drawer. 2 – Pull the sliders forward, until you hear a click, repeat on both sides.

